

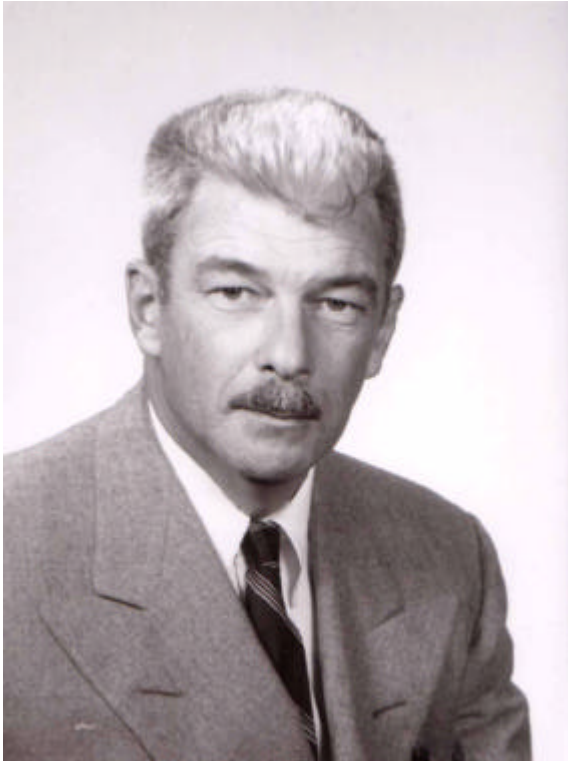


# St. Lawrence University

## Geology Newsletter

Spring, 2004

\*\*\*\*\*



### ROBERT O. BLOOMER

I believe that many of you have already heard the news that Dr. Bloomer passed away on February 21, 2004. As the senior member of the department, I may be the only one of us who actually met Bob in a business context in as much as Bob interviewed me for my position! He was decidedly professional; even when dressed in khaki field attire he preserved the seriousness of purpose and obvious care for his department and his discipline that many of you came to understand from him. He was a great teacher and a devoted Laurentian, taking pride in the college and in the Geology he studied. We are glad that Doc enjoyed a long retirement when he could be visited by many of you for the recounting of the days in Hepburn Hall and lots of field places. We are particularly aware of the sadness that comes to family when loved ones die and our deepest sympathy is certainly outgoing to the generations of Bob and Vera's children and grandchildren for whom the loss of this patriarch is greatly felt.

The Rock Doc has gone and he will be missed.

JME

\*\*\*\*\*

### NEWS FROM GEOLOGY ALUMS:

#### Graham Baird '98

Graham sent a photo of himself and Andrew Fountain '75 at the Tarfala Research Station (northern Sweden). He is finishing up classes at University of Minnesota and will be taking his Ph.D. oral exam.

#### Daniel Bisaccio '76

Dan sent a very impressive reprint of a chapter that resulted from his ecology class studies in the Yucatan for several years. Dan has led some very talented high school students in his program.

#### Tom Bjerstedt (Faculty)

Tom is in New Orleans working for the Department of the Interior, Minerals Management Service. He is now doing NEPA environmental assessments and EIS for lease sales, exploration, development, gas hydrates, and barrier island restoration in the Gulf of Mexico. Some days he misses academia.

#### Aaron Bogucki '95

Aaron is working in Stuart, Florida as a 7<sup>th</sup> grade biology teacher. He and his wife, Jean, work in the same middle school.

### **Tim Bouchard '03 and Diana Odorcuk '03**

Tim and Diana are each pursuing work at U. Alaska, Fairbanks. They seem to have survived the first winter and we understand they are planning their field seasons! They seem to like the state from what we could discern during their brief visit to Canton between semesters. Tim has been doing some great photography as evidenced by a beautiful print of Sandhill Cranes that he gave Mark! Thanks, Tim.

### **Ed Cavallerano '03**

Ed is just back from Antarctica where he was doing research on the recent history of penguin colonization. He wrote: "We've been walking miles of coastline doing surveys, and excavating these paleo penguin sites. Most days, we've been averaging 10-14 km worth of hiking with full packs. The scenery is amazing! We walk along all these glacial landscapes, and the geology has been superb. Ice-wedge polygons, lateral moraines, cirques, beach terraces, and amazing rocks in the glacial tills.

I had my national geographic photo op the other day. We went to an active penguin colony – bones everywhere, even found a skull (had to leave it though). At any rate, near the end of the day, I walked down the shore and sat down next to a rock near to where all the penguins were going in and out of the water. Within a quarter hour I had them all around me, within a foot of my head and stumbling past my feet. It was a pretty remarkable experience. I had a 28mm lens on the camera, and even with that I could only fill my frame with the penguin's head!!!! I think I got some beautiful pics. The chicks were out also."

### **Jeff Chiarenzelli '81**

Jeff and wife, Val, have a new addition to their family this Spring. Ariana JoAnn was born February 16, 2004. Congratulations! They are becoming acclimated to Potsdam where Jeff is a faculty member in the Geology Department.

### **Heather Cunningham '98**

Heather is now teaching all the geology curriculum at the Kent State University, Tuscarawas campus. Mark's Paleo field trip to Cincinnati welcomed her as an alumni guest

along with **David Waugh ('99)** who progresses on his Ph.D. studies at Kent. They had a fine reunion while collecting Bryozoa and the occasional trilobites. The entire class participated in the dedication of Trammel Fossil Park in Sharonville during the trip. David arranged a visit for the class at Kent State on the return to Canton.

### **Dean Eppler '74**

We have heard quite a bit from Dean especially since the photos have been coming back from Mars! There are some spectacular data and many questions coming back from those missions. Now that we plan to visit Mars he will be turning his attention to space suit design again. Keep your eye on the Geology Alumni Webpage for added news about Dean.

### **Kenneth Feathers '71**

We had a nice note from Ken recently. He recounted some of Jim Street's influences on him and acknowledged the importance of the student research experience at the undergraduate level. Good to hear from him! Thanks, Ken.

### **John Foxwell '91**

John emailed us an update on his life. He is a registered geologist in Oregon and Washington and a licensed hydrogeologist in Washington. John had a recent job change to GeoEngineers, a regional NW environmental and geotechnical consulting firm. In addition to managing a portion of the environmental group, he is a Senior Project Manager working on industrial assessment and cleanup projects, Brownfield Redevelopment, abandoned mine assessment and cleanup projects, among others. He and his wife, Krista Lopardo ('93) just added a new baby girl to their family last April – Tabitha Diane. Congratulations John and Krista.

### **Frank Henderson '81**

Frank and family paid a "look over" visit to campus this past summer, and we hope they liked what they saw. Frank runs his own drilling company in the central Appalachian Basin. We wonder if he will find any interest in the current Trenton gas plays in New York. We hope to hear more from Frank in the future.

### **Steve Hilger '89**

Steve is presently not working in geology but hopes to get into some volunteering at a marine coastal education center in Old Saybrook, Connecticut where he lives with his wife Lisa and children Ariana, Austin and twins, Logan and Garrett.

### **Trent Hubbard '94**

Trent is now in his first year of teaching at Central Missouri State in Warrensburg. Trent's fiancé is from Fairbanks, Alaska, and the big excitement will be there on June 21 when he and Greta will be married. Congratulations!

### **Frank Karboski '77**

Frank is still consulting in environmental and engineering geology at his company, KCS Geology, in Camden, New York. He writes: "I've learned much of both and continuing to learn, particularly soil mechanics and geotechnical engineering; currently getting up on the new seismic code for NY. Lately I've been studying Fishers and Rickards Cambrian-Ordovician and Devonian-Silurian map and chart series and getting up on NY state stratigraphy in general, and continue to examine any outcrops I can get myself to in my travels."

### **Len Mason '99**

Len is engaged in a M.S. project in hydrology at U. Nebraska. Although he doesn't hear from Len – who must be too busy to write – Mark spoke with Len's advisor at GSA and learned that he is making good progress.

### **Sarah (Zimmerman) McElfresh '98**

Sarah and Scott sent a picture of their new addition – Kathryn Margaret McElfresh, born on September 17, 2003. She is beautiful. Congratulations! (See note about Alumni Webpage and SLUGAC 5).

### **Stephen Metzger '78**

Steve called to say that interest in his dust devil work on Mars has picked up since the recent rover landings. You can contact Steve at [dustdv11@yahoo.com](mailto:dustdv11@yahoo.com).

### **Grant Nelson '79**

Grant works for IBM in the Netherlands now. His specialty is managing the design and implementation of the content and design side of enterprise portals – full blown intranets combining all of a company's applications under one browser interface that employees, suppliers and even clients can customize to their personal day to day needs. He enjoys it but would rather be doing something with rocks or boats. Grant's wife, Liliane, makes jewelry, selling it in the Netherlands as well as in the US.

### **Daniel Peppe '03**

Dan is presenting a poster with Dr. E. as co-author at the International Botanical Conference in Argentina even as we write this. Dan presently is pursuing a Ph.D. at Yale.

### **Michael Perfit '71**

How many of you caught the photo of Mike studying rocks from the mid-ocean ridge that appeared in January Geotimes? Mike was sporting a very readable St. Lawrence t-shirt. Thanks, Mike, it looked super.

### **Derrick Pitts '78**

Derrick, Chief Astronomer of the Franklin Institute in Philadelphia and SLU Trustee, was interviewed on NPR where he remarked about the important influence Dr. Street had had on his education. Derrick visited with some of our majors last month when he was on campus for the Trustee Meetings.

### **Booth Platt '00**

Booth is doing Masters work in Acarology at SUNY ESF in Syracuse. The work is challenging and keeps him busy. His thesis paper with Mark Erickson and **Doug Jennings** ('93) came out in late November and represents a significant piece of work on fossil mites.

### **Metra (Mero) Pratt '96**

Metra is currently working on making maps for an oil exploration company called Fortuna Energy Inc. in Horseheads, New York.

**Thomas Shaver '76**

Tom has his own business in Washington. He and Mark had a good visit during the Geology Alumni party at GSA Seattle this past Fall. We hope Tom will stay in touch and visit when (and if) he comes East.

**Andrew Solod '01**

Mark was in contact with Andrew this January as they edited their paper on Glovers Pond fossil mites as indices of the Younger Dryas cold episode from the International Congress in Mexico. Andrew is now working at Groundwater & Environmental Services in Massachusetts and really enjoys it. He is hoping to transfer to a western office so he can return to the Rocky Mountain lifestyle he prefers. Good luck Andrew.

**Brandt Temple '94**

Brandt phoned to say he has moved from Amerada Hess to a private exploration company, Whitmar Exploration. He is chasing gas prospects and enjoying the business.

**John Wyckoff '85**

A Christmas card from John says that he continues to do environmental consulting for a law firm in the D.C. area. John is a troubleshooter analyzing particular problems in "advance" if possible. His brother **Jeff ('85)**, wife Beth ('85) and family visited campus in June. Now we believe it is John's turn to find an excuse to see the newest campus improvements. We would welcome such a visit.

\*\*\*\*\*

**Geology Alumnus To Receive Honorary Doctorate**

The St. Lawrence University Trustees voted to award an honorary doctoral degree to Geology alumnus **Mark Klett '74!!** The news release quoted below is from the St. Lawrence Public Relations office and more information can be found posted on our Geology alumni web site. We are extremely proud of this achievement for many reasons. In particular St. Lawrence can be a place where art and science come together and

Geology is a particularly good vehicle for that as many of our alumni are aware.

CONGRATULATIONS MARK! Those alums in the area on May 16<sup>th</sup> are invited to drop in and cheer when he is hooded.

*"...Klett's St. Lawrence degree is in geology, and he earned a Master of Fine Arts degree in photography from SUNY Buffalo. Klett is the chief photographer of the Rephotographic Survey Project, a comparative photographic survey of the American West following the 1870s work of William Henry Jackson and Timothy O'Sullivan. A Regents Professor of Art at Arizona State University at Tempe, Klett has exhibited work at the Museum of Modern Art, the Light Gallery, and the International Center for Photography in New York City; the Amon Carter Museum in Fort Worth, Texas; the George Eastman House in Rochester; and the Corcoran Gallery of Art and the National Museum of American Art in Washington, DC. His photographs have also appeared in national magazines and in a series of books he has authored."*

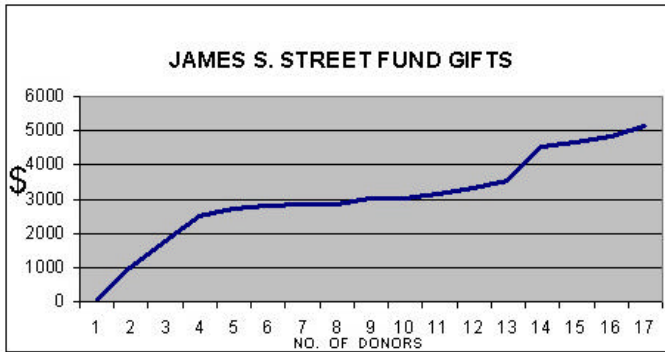
---

**STREET ENDOWMENT**

In a January letter to alumni who had been involved in independent study in the department, especially with Dr. Street, the department asked alumni to consider a gift specifically to the Jim Street Fund Endowment. The request was part of an effort to double the value of that endowment. The reason – we have more students who want to do more research and present or attend more meetings at greater distances than in the past. Including two December gifts to the Fund, your response has been very gratifying and your gifts will begin to make a difference immediately as we plan next year's work. As the inset figure illustrates, 15 donors have generously responded with a wide range of gifts that cumulate to \$5,125 at this writing. Several of these gifts were made by people that we haven't heard from in a long time. That is truly an impressive response.

What I would like to point out to all of our alumni is that there are more than 300 of you out there and more than two thirds of you learned

something of significance to you from Jim Street. If each of you were to make a modest gift to the Street Fund, I believe we could achieve the goal! If you are considering such support, please don't forget that you must specify the "James S. Street Fund." Thank you for your confidence.



\*\*\*\*\*

**NEWS FROM MARK**

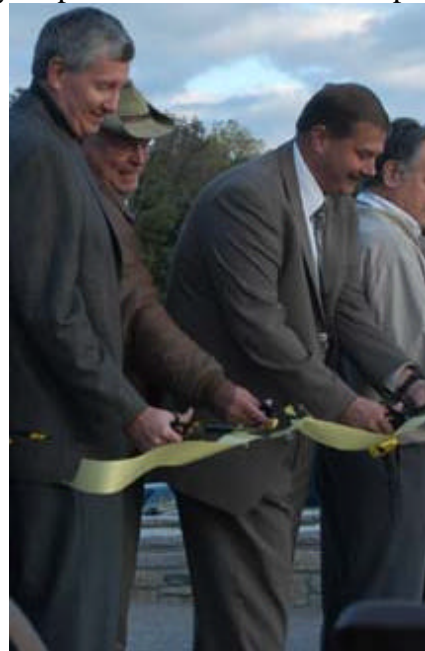
I can't recall what I wrote about last year in the June '03 Newsletter, but I'll start in mid-June and go from there! That was when Lance was still home helping me replace a wall in the garage after he had completed another Dean's List year at Macalester. He really began to enjoy his Geology minor enough to decide to turn it into a second major this year! He liked Mineralogy in particular. He even spent the month of January on a field trip in Crete examining structural relations with a side trip to Santorini to check out the caldera. Now he is into a research project with u-stage working on deformation of calcite twins in the Alps while he finishes his degree. Graduation is May 15<sup>th</sup>. For those of you who have read that Mark Klett is being awarded his honorary doctoral degree on the 16<sup>th</sup>, you realize that I must be in St. Paul for Lance and get the red-eye to Canton for SLU graduation on the 16<sup>th</sup>!! These are interesting times. Anyway Lance is going to take a year and then probably explore a graduate degree in Geology or geophysics or some mix. He returned to MSP in June only to find that his job had evaporated so he found employment at the Mall.

I spent June teaching the Freshwater Mussel course. This year we explored the Indian and

upper Oswegatchie drainages. Andrew Fetterman returned to work with us for which we are grateful as he is a good SCUBA diver. That got us into some of the larger waters of the main stem rivers. He found a single specimen of a clam that we have been looking for for a couple years now so the season was a great success. Chris Stevens assisted informally with the course also when he could. In the fall semester he began to enter and analyze the data using GIS. With his help that is making good progress.

Then Mother and I busted out of Canton and spent six weeks at camp in Vermont. Fishing was great, and it was good to get away. Makes retirement look like it will be quite bearable when it comes along!! Golf, too, was better. I even beat my brother for the first time!

Fall brought the Paleo trip to Cincinnati with a good-sized class of hard-working students. They were fun to be with. Dave Waugh came down from Kent State. We did the Skyline Chili in Oxford, Ohio, this time after visiting Heuston Woods where Dave is working on Waynesville Bryozoa. The trip highlight was ribbon cutting at the Trammel Fossil Park in Sharonville. This is the site most of you know as A640! The class was invited to participate and JME got to share in the ribbon cutting! D. Waugh took photos as his thesis specimens had come from the site. He was also kind enough to host us for a visit to the Geology Dept. at Kent State on our trip home.



GSA was in Seattle where I was involved in two posters: Waugh, D.A., R. Crawford, and J.M. Erickson. 2003. Whole-colony bryozoan growth morphology: an underutilized tool in understanding type-Cincinnatian paleoecology. Carpenter, S.J., J.M. Erickson, J.W. Hoganson, and G. Ludvigson. 2003. Alpine glaciation in the Laramide Mountains during the Late Cretaceous and Early Paleocene. We had a great meeting and a terrific St. Lawrence alumni group get together. I got to see people like Tom Shaver whom I hadn't seen for 25 years! Dave Griffing, Andy Fountain, John Rayburn, Barb and Dave Tewksbury, Heather Cunningham, Ken Johnson and wife Elena Perez, Ron Metzger, Don Rodbell, Steve Metzger, Gordon Baird, Tim Grover, and Abi Howe to name a few of the attendees. I will tell you that this is a very interesting group of people doing a very wide range of things and doing them well! I was impressed. Steve Robinson and John Bursnall were there as well. For a meeting that I had not intended to go to this turned out to be a good one because so many of you were there!

Other accomplishments included publication of my paper with Booth Platt on fossil mites at the Hiscock Site, and the paper with Tim Bouchard in which we named a trace fossil *Sanctum laurentiensis* in honor of St. Lawrence! That was in the September issue of Journal of Paleontology. Think about the challenges of getting that name to come out right starting with first discovering a trace fossil boring that had not yet been described from the Cincinnatian! I also completed a manuscript with John Hoganson in ND and we are currently preparing another for a GSA Special paper. Likewise, I completed final editing on the Glovers Pond mite paper that Andrew Solod and I gave in Mexico in 2002. Dan Peppe and I are working on a Fox Hills leaf paper as well, but Dan is on his way to Argentina to present some of our work at the International Paleobotany Conference next week first! Things have been very exciting recently as you can tell.

Two other departmental activities have garnered some of my efforts. The need to expand the Jim Street Fund as discussed elsewhere above is, I feel, an important effort. Many of the activities that I discuss in these

newsletters involve student participation in my research or that of other faculty. This happens because of the Street Fund and other gifts from alumni and friends. Our Geology program is truly unique among St. Lawrence programs because of the kind of research our students do. It takes them to places like Alaska and North Dakota as well as more local sites but all are beyond the scope of most St. Lawrence Funds in terms of both costs and logistics. Unfettered research funds are the single most important encouragement for that work and we are very grateful for your support of same.

A second item that will grow on my horizon is the next SLUGAC that we have scheduled for late April of 2005. I have already had many indications that you are interested in that meeting, and I will want to hear from all those who wish to attend or to participate just as soon as you wish to commit. We expect a very dynamic group and some great fun at the same time!! Please see the alumni web page and **FILL OUT THE FORM IN THIS LETTER** if you plan to be with us. Mark it on your calendar so that time is **BLOCKED** out!!

That's about all I have time to tell you now. The new UC is a great building as is the new Wachtmeister Field Station. Come and see them. Come to Homecoming this year for a special geological presentation as well! Watch the news for that.

Later,

Mark Erickson

---

## NEWS FROM STEVE

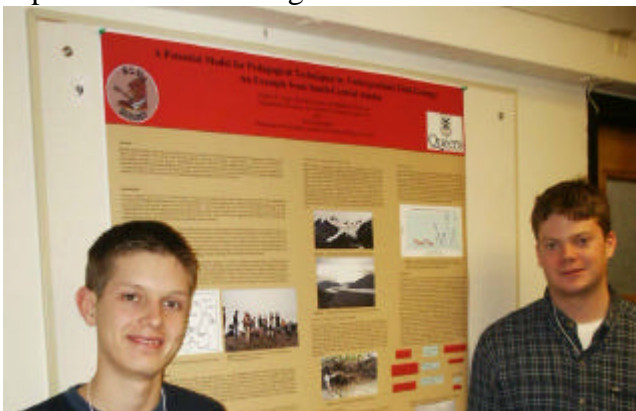
Greetings from Canton!

The past year has been very eventful. In addition to regular course offerings, I decided to do something different this year. In conjunction with Queen's University in Kingston, Ontario, the Geology Department ran a 2 week field trip to south central Alaska. Eleven St. Lawrence and 11 Queen's students plus instructors (myself and Bryan Russell '03 from SLU and Dr. Scott Lamoureaux and PhD student Jackie Cockburn from Queen's) completed a 400 mile circle of the Chugach Mountains, including 100 miles across Prince William Sound by ferry.

We had field stops and conducted research projects looking at contemporary and past glaciations, fluvial geomorphology, proglacial lakes, dendrochronology, coastal dynamics, peatlands, pipeline engineering, and abandoned mine sites.



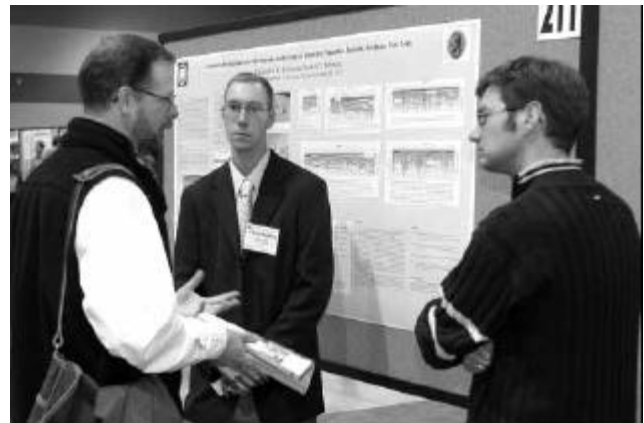
Judging from the student comments, the several days we spent hiking on and near the terminus of the Matanuska Glacier were a trip highlight. I plan to offer this trip again possibly at two year intervals, and definitely again with Queen's. The two student groups mixed really well and turned the trip into a unique international experience! We even went up to Queen's in November for a project presentation session and reunion. Two trip participants (Nate Vogan '05 and Brendan Lennon '04) joined me at the 34th annual Arctic Workshop in Boulder, Colorado in March. At the conference they presented a poster outlining our strategy on the trip for student learning and research.



My involvement (and that of the students) in

the Integrated Science and Education Initiative (ISEI) is growing. Last March we hired a local drilling company to install 15 groundwater wells on the Kip Tract, just south of campus near the Little River. Diana Odorcuk '03 was involved in the initial hydrogeologic testing of the wells for her senior thesis. The wells are now being continually monitored by students (primarily Brendan Lennon '04) and the data is being used extensively in my Hydrology and Hydrogeology course.

The last year also saw the department purchase a ground penetrating radar (GPR) unit. So far two students have taken advantage of this great new equipment for their senior theses. Rob DeLong '03 examined gravesites at the old County Home site on the Grass River. Chris Stevens '04 used the equipment to examine the internal structure of paleodeltas in St. Lawrence County. Chris presented his results at the Geological Society of America conference in Seattle, with attendance funding coming from the Jim Street Fund.



Christopher Stevens '04, center, with Assistant Professor of Geology Stephen Robinson, right, discuss Stevens' presentation with a visitor at the annual meeting of the Geological Society of America

The coming year promises to be full of excitement also. I plan to take a student to the Northwest Territories in northern Canada for permafrost research, and several promising students are planning senior thesis projects for the summer.

I hope to meet up with some of you in the near future...until next time...

Stephen Robinson

# SECOND ANNOUNCEMENT

# SLUGAC 5



## “REMEMBERING OUR ROOTS”

### APRIL 21-24, 2005

The SLU Geology Alumni Conference is a student-oriented event designed and originated by alumni to inform Geology students about all aspects of the profession. Alumni present talks about their projects, lead discussions, reminisce a bit, and generally allow networking between alumni, students, and faculty and among alumni.

Alumni use the occasion to inform themselves about department and university programs, goals and needs, and to network with their peers. The Geology Alumni Council, comprised of those alumni attending SLUGAC, meets to discuss their insights about the profession and their new insights about St. Lawrence.

Some activities would include:

- **R. O. Bloomer Alumni Banquet (4/22/05)**
- **Talks for and with Geology students** – “What I do and how I do it”
- **R. O. & Vera Bloomer Lecture (4/22/05)**
- **Seminar (4/23/05)** – Preparing for work: What are the skills to die for?
- **2<sup>nd</sup> W. T. Elberty Memorial Auction (4/22/05)**
- **Possible Reception with President and Mrs. Sullivan**
- **Awarding of W.T. Elberty Medal (4/22/05)**
- Examination of Dolan Outdoor Lab (4/23-24/05)
- Tour of new campus buildings including Brewer Bookstore, Student Union, and Newell Field House (4/23-24/05)
- Tour of Wachtmeister Field Station funded by parents of geology major Erik. (4/23-24/05)

**Return Form on Page 10**

## NEWS FROM THE CHAIR

Dear All:

This year has just whistled by! Deadlines are deadlines though and Mark has me in his sights - so here goes!

I'm really pleased to say that the department continues to remain healthy with twenty-five registered majors. From my interview with them as they sign up it is clear that just about all are hankering to start an independent research project. Your recent response to Mark's request to help us support this interest through an increase in the Street Fund endowment was nothing short of spectacular! Thank you so much. We have now recovered an expectation in our majors that they will at some stage in their undergraduate career be involved in independent research. This is a very healthy sign indeed and we are very gratified to see our efforts rewarded in this way.

We remain a field-oriented program and have no intent of changing this. The introduction of a major emphasis in field investigation to *The Dynamic Earth* that we introduced a few years ago is clearly 'a keeper' and our extended upper level field-trip courses are a continued attraction:

\*\*\*\*\*

last summer Steve Robinson organized a very successful trip to Alaska in combination with a group from Queen's University and we are hoping to make the Peruvian Andes our next stop - utilizing Don Rodbell's ('83) and Cathy Shradly's expertise. Don is visiting us later this semester and we hope to iron out details then.

The Dolan outdoor (outcrop) lab is moving along and we will have six installations (and hopefully more) in place by next fall. The crystalline 'basement' is now complete and we have at least two sources for the overlying sedimentary sequence. Some of us would like to get hold of an ophiolite complex - but that might be asking too much! Maybe not?

The new science facilities planning process continues and this has occupied quite a bit of my time over the past few months. One of our outcrop installations has been incorporated into the landscaping plans. However, there is likely to be a delayed start of six months or so but it is clear that we will eventually be in new (refurbished) surroundings in Bewkes. It'll be interesting to see if we make it before I retire - it'll be close!

All best wishes, John

How many people can you identify in the photo below?



**PLEASE RETURN THIS FORM TO MARK ERICKSON, Geology Department, St. Lawrence University, Canton, NY 13617**

We must have some idea of initial interest in order to advance SLUGAC planning. This is particularly important to get support from SLU and for scheduling meeting and dining spaces and the President's time. Indicate interest by RETURNING THIS FORM. Hard copy is most desirable but response by calling or emailing Mark Erickson at 315-229-5198 or [meri@stlawu.edu](mailto:meri@stlawu.edu) is also possible. You may also email Sarah McElfresh [mcelfres@telerama.com](mailto:mcelfres@telerama.com) because she is manager of the department's alumni page website. We will try to post a running list of those who have expressed interest so get your friends together and let us hear from you.

We can already tell you that interest is high this time and it will be a great conference if the number of responses Mark has already had is any measure.

**Please sign up ASAP and reserve late April 2005 NOW on your busy schedules.**

**NAME** \_\_\_\_\_ **GRADUATION YEAR** \_\_\_\_\_

**Business Affiliation:** \_\_\_\_\_

**NAME(S) OF ACCOMPANYING ATTENDEES:** \_\_\_\_\_,  
\_\_\_\_\_

**ADDRESS FOR MAIL** \_\_\_\_\_  
\_\_\_\_\_  
\_\_\_\_\_

**email** \_\_\_\_\_ **PHONE** \_\_\_\_\_

**If you so desire, you may help us by making ADVANCED PAYMENT OF REGISTRATION WHICH INCLUDES CONFERENCE PROCEEDINGS BOOKLET, LUNCH ON FRIDAY, ADMISSION TO RECEPTION, COST OF R. O. BLOOMER BANQUET, AND ADMISSION TO THE R. O. AND VERA BLOOMER LECTURE AND THE W. T. ELBERTY GEOLOGY AUCTION:**

**FOR THE ATTENDEES LISTED ABOVE, I ENCLOSE MY CHECK FOR \$65.00/PERSON made to the SLU GEOLOGY ALUMNI CONFERENCE TOTAL: \$**\_\_\_\_\_

**Are any in your party requiring a non-meat meal? \_\_\_\_\_ How many please? \_\_\_\_\_**

**I WOULD LIKE TO PRESENT A 12-MINUTE TALK WITH THE FOLLOWING THEME OR FOCUS (or title if known) \_\_\_\_\_**

**I WOULD LIKE TO DONATE A GEOLOGICAL ITEM FOR THE W. T. ELBERTY AUCTION. \_\_\_\_\_:WHAT? \_\_\_\_\_**

**I VOLUNTEER TO HELP WITH THE AUCTION. \_\_\_\_\_; BE AUCTIONEER \_\_\_\_\_**

**OTHER SUGGESTIONS:** \_\_\_\_\_

# Geology Newsletter

Spring 2004

---

**WE ARE ALWAYS EAGER TO HEAR FROM ALUMNI. PLEASE FILL OUT THE FORM BELOW AND RETURN IT TO US. WE'LL SEND YOUR NEWS TO OTHER ALUMNI VIA THE NEXT NEWSLETTER. (Remember — we are starting an E-Mail address list of geology alums. Please include your E-Mail address or send it to Mark at MERI@STLAWU.EDU.)**

-----

**NAME** \_\_\_\_\_

**ADDRESS** \_\_\_\_\_

\_\_\_\_\_

**PHONE:** \_\_\_\_\_ **E-Mail:** \_\_\_\_\_

**CLASS** \_\_\_\_\_ **GRADUATE SCHOOL: YES** \_\_\_\_\_ **NO** \_\_\_\_\_ **IF YES – WHERE**

\_\_\_\_\_

**YEARS ATTENDED** \_\_\_\_\_ **DEGREE (S) RECEIVED** \_\_\_\_\_

**INFORMATION FOR THE NEWSLETTER – YOUR ACTIVITIES, CLASSMATES' WHEREABOUTS, ETC.**